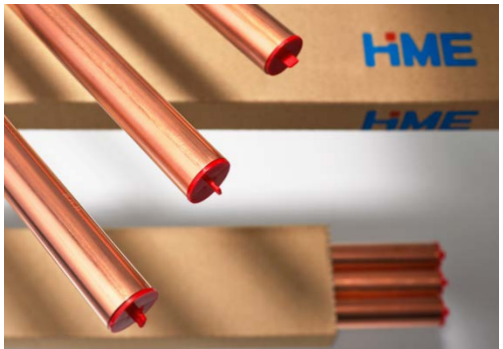


[EN]

Industrial Tubes

● TECTUBE®_cips

● TECTUBE®_med





■ **TECTUBE®_cips**

■ **TECTUBE®_med**

High purity copper tubes for the transport of gases, refrigerants and for the production of vacuum installations. They are gas-tight, can also be used at high pressure, are easy to process and have an excellent corrosion resistance which is typical for copper. Special cleaning processes ensure a very clean inner tube surface.

● TECTUBE®_cips

TECTUBE®_cips was developed for the installation of ACR components in refrigeration circuits and for the transport of industrial and laboratory gases. It is used as a conduit in refrigeration circuits and in distribution systems for gases. Its special characteristic is its bright, clean and dry inner surface. It meets and even exceeds the requirements of the EN 12735-1 (seamless copper tubes for refrigeration and air-conditioning technology; tubes for piping systems) and ASTM B 280.

These two standards for copper connecting tubes for refrigeration and air conditioning technology require that the quantity of max. permissible residual grease on the inner surface of the tube does not exceed the value of 38 mg/m². To preserve the factory guaranteed interior cleanliness every tube is tightly closed on both ends. To ensure traceability according to EG-Druckgeräterichtlinie PED 2014/68/EU (EC Pressure Equipment Directive PED 2014/68/EU) the date of manufacture to the day, the tube dimensions, the standard and further details are engraved. For better readability until installation this information is also available as ink marking printed on the tube.

Available in coils and straight lengths.

● **TECTUBE®_med**

TECTUBE®_med is used for the distribution of medical gases and for the creation of vacuum installations. In addition to the guarantee for all the properties mentioned for **TECTUBE®_cips**, an even higher internal cleanliness level of max. 20 mg/m², which is ensured by a special cleaning process, and a tube marking adapted to the requirements of EN 13348 (seamless copper tubes for medical gases and vacuum) also apply. To ensure traceability in accordance with the EG-Druckgeräterichtlinie PED 2014/68/EU (EC Pressure Equipment Directive PED 2014/68/EU), the exact date of manufacture, the tube dimensions and other details are engraved.

Available in pancake coils and straight lengths, according to dimension list.



SIZES

Tube sizes and packaging units can be found on our homepage in the downloadcenter

www.HMEmetal.com/services/downloadcenter



TECHNICAL SPECIFICATIONS

The production of **TECTUBE®_cips** and **TECTUBE®_med** tubes is carried out using a quality assurance system, which is certified according to DIN EN ISO 9001 PED 2014/68/EU

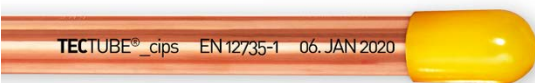
The material is Cu-DHP according to EN 12735-1 and EN 13348.

For further questions please contact us via your supplier.

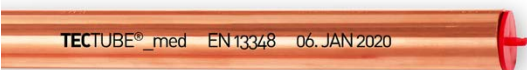


WARRANTY

There is a warranty agreement for **TECTUBE®_cips** with the Verband Deutscher Kälte- Klima-Fachleute e.V. (VDKF), Fellbach/Germany, and the Federal Guild Association of the German Refrigeration System Builders' Trade, Maintal (BIV Bundesinnungsverband des Deutschen Kälteanlagen-bauerhandwerks, Maintal, Germany).



TECTUBE®_cips



TECTUBE®_med

TECTUBE®_cips and **TECTUBE®_med** are seamlessly drawn copper tubes made of Cu-DHP. They are supplied as straight lengths or pancake coils.



● Product advantages

- stable, seamless metallic copper tube, therefore 100% gas-tight
- particularly clean inner surface **TECTUBE®_cips**
- specially cleaned inner surface **TECTUBE®_med**
- Traceability for each tube through continuous captive marking
- **HME** brand quality

■ HME Copper Germany GmbH

P.O.B. 3253
58690 Menden
GERMANY
Phone +49 2373 161-0
info-industrial-tubes@HMEmetal.com
www.HMEmetal.com

Industrial Tubes

[EN]

Contact person for technology and sales:

■ Technology

Ulrich Naumann
Phone +49 2373 161-603
Ulrich.Naumann@HMEmetal.com

Barry Alcock
Phone +49 2373 161-602
Barry.Alcock@HMEmetal.com

■ Sales department

Holger Wellmann
Phone +49 541 939 336-30
Holger.Wellmann@HMEmetal.com

© = registered trademarks

This information corresponds to the state of knowledge at the time of writing. Changes to the range of dimensions and technical properties in the sense of the technical progress is reserved.

The above information cannot replace technical advice.

The colours in this brochure are typographically reproduced and to be considered as approximate.

Status March 2023.

