

Hisense HVAC

Reimagine your solution



Qingdao Hisense HVAC Equipment Co., Ltd.
Hisense Tower, Qingdao, China

<http://www.hisensehvac.com>

[Hisense HVAC](#)

[Hisense HVAC](#)

hhexport@hisense.com

[Hisense HVAC](#)

CE CB

202303POL

REFERENCE PROJECTS

➤ CONTENTS

HISENSE

HISENSE HVAC

REFERENCE
PROJECTS





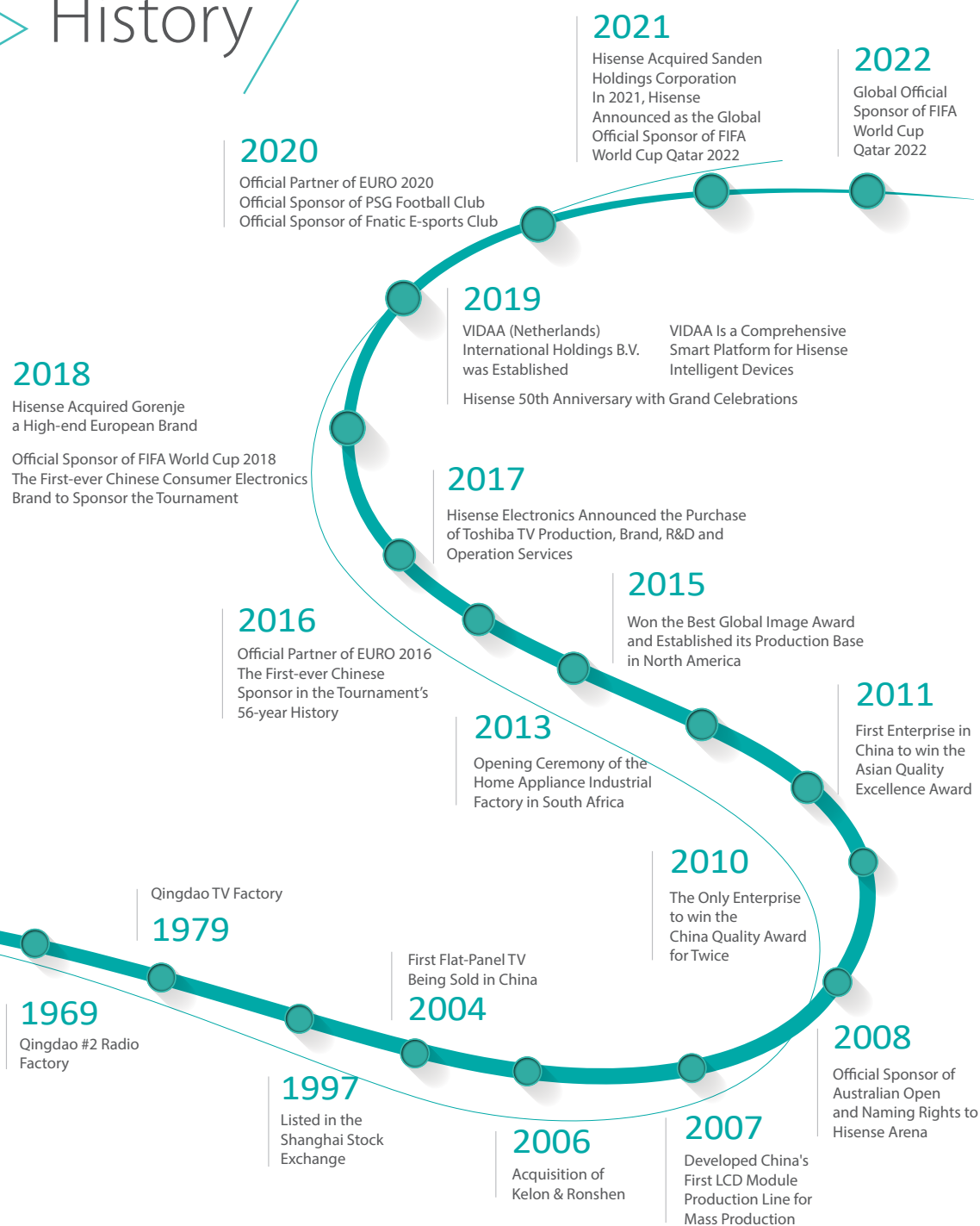
Hisense

Qingdao Hisense HVAC Equipment Co. Ltd. is a leading manufacturer of heating, ventilation, air conditioning and other HVAC equipments, integrated with the product development, manufacturing, sales and after-sales service as a whole.

Hisense HVAC always regards product technology research and development as the most important value. With strong ability of technological innovation, Hisense HVAC has participated in the formulation and revision of 86 national standards, industry standards and association standards, and boasts 1440 authorized patents in the field of CAC and heat pump products. With the great support of all shareholders and customers, Hisense HVAC is expected to become the leading brand in the industry.

Note: The above data is as of Dec. 31th, 2022.

History



Brands



HISENSE SPIRIT



VISION
To be a century-old company, and to become the most reliable brand in the world.

MISSION
To pursue scientific and technological innovation, take the lead in the advanced manufacturing with intelligence as the core, and bring happiness to millions of families with high-quality products and services.

VALUE
Integrity, Innovation, Customer Focus, and Sustainability.

SPIRIT
Respect, Dedication, Innovation, and Efficiency.

ATTITUDE
To explore new businesses with determination and persistence.

Industries



Multimedia

TV and Display Devices
Internet TV Operation
Mobile Communication Devices
Optical Communication Devices
Chip



Household Appliances

Refrigerator
Freezer
Air-conditioner
Washing Machine
Kitchen Appliance



IT Smart Systems

Smart City
Smart Community
Smart Transportation
Smart Business
Medical Electronic Devices
Smart Home System and Service

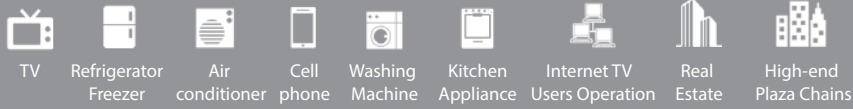


Real Estate and Modern Services

Real Estate
High-end Plaza Chains
Mould Design and Manufacturing
Business Finance

Products

B2C



B2B

HISENSE HONOR



No. 1 China Independent Innovation Brand Value

Source: PRC AQSIQ



Top 20 China Employer

Source: Beijing University Social Responsibility and Employer Brand Research Center



Top 10 Foreigners' Familiar China Brand

Source: CIPG



Top 10 Mainland China Innovation

Source: Clarivate Analytics



BrandZ Top 10 Overseas China Brand

Source: BrandZ Top 10 Overseas China Brand from WPP Kantar Millward Brown and Google



Official UEFA EURO 2016/2020™ Sponsor

Source: UEFA



2018/2022 FIFA World Cup™ Official Sponsor

Source: FIFA

Market Position



TV

NO.4

TV shipment in the world

Source: IHS

NO.1

Hisense TV Value Share In China

Source: China Market Monitor (Online + Offline)



Refrigerator

NO.2

in China market with Hisense and Ronshen brands

Source: CMM



Air-conditioner

NO.2

in China VRF market

Source: CMM



Optical Connectivity Access Networks

NO.3

Global Market Share of Optical Module Products

Source: ICCSZ



Intelligent Transportation System

NO.1

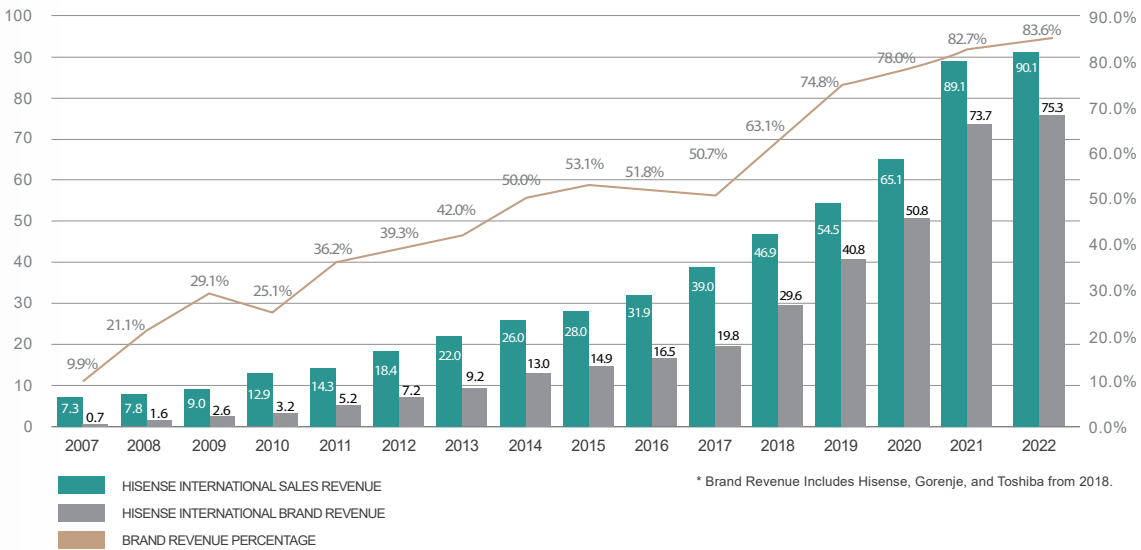
Combined Number of Orders from Urban Intelligent Transportation End-Users in 2011-2020

Source: 7its.com

HISENSE SALES PERFORMANCE

SALES REVENUE OF HISENSE INTERNATIONAL

UNIT: 100 MILLION USD



HISENSE OF THE WORLD

Shining as well on the big stage

Hisense

Hisense Global Events

MORE THAN **66**
BRANCHES

CONDUCT
BUSINESSES
IN MORE THAN **160**
COUNTRIES

As the world's well-known manufacturer of smart TV, household & commercial appliances and communication equipment, Hisense has more than 66 branches, 23 R&D centers and 31 production bases in the world. Hisense Group carries out businesses in more than 160 countries in the world.

GLOBAL TURNOVER
IN 2022 REACHED 26.59BILLION USD

23 R&D centers

31 production bases

Hisense



OFFICIAL PARTNER OF UEFA EURO 2020™

Hisense UEFA

Hisense is the official sponsor of the 2016 and 2020 UEFA EURO.



Hisense Canada R&D Center

In 2012, Hisense took in talents all over the world to prepare for intelligence revolution. A large number of talents in the field of smart TV were introduced, including Jamdeo, a design team from Canada. It was this team that fermented and incubated minimal smart TV, VIDAA TV.



Hisense R & D Center in the United States

Hisense Group's R & D center in the eastern part of the United States was officially put into operation in 2010. The center is mainly responsible for development of new technologies and new products of Hisense multimedia industry in American market so as to provide strong support for further developing the American markets, especially the North American market.

- Overseas company
- Production base
- R & D Center



F1 race

Hisense cooperates with Red Bull Racing, which has won the annual constructors' championship and drivers' championship in F1 race for many times and becomes the official strategic partner of Red Bull Racing in the following years, which also marks that Hisense and Red Bull Racing fight together in F1 global arena. There are Hisense and Red Bull Racing where there are F1 races.



Hisense FIFA

Hisense was the top sponsor of the Russia FIFA in 2018.



Hisense South Africa

In 2013, Hisense established the largest household appliance manufacturing base in Atlantis Industrial Park, Cape Town, South Africa.

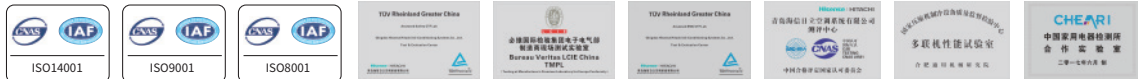
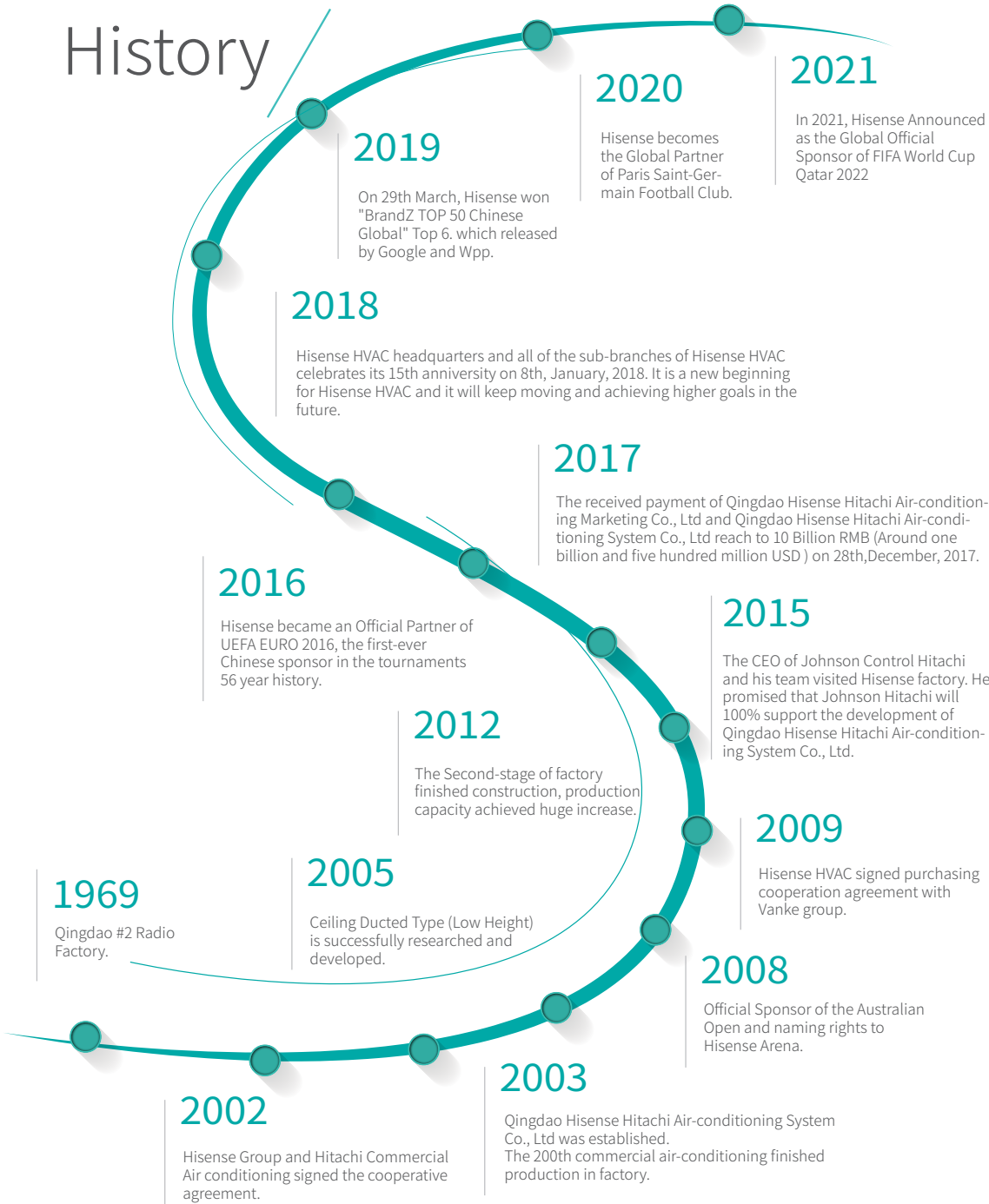


Sponsor Australian Open Tennis Championship & Hisense Arena

In 2013, Hisense Group signed an agreement with the Tennis Australia Limited to be the sponsor for Australian Open Tennis Championship, together with Rolex, IBM and other international brands. Hisense is also the first Chinese brand to sponsor this event. Sponsorship for Hisense Arena is renewed to 2017 by means of contract extension.

Hisense HVAC

History



Factory



Three factories



Top class laboratory



Advanced production line



Automated production process



World's top-level R&D teams

Quality



Outdoor Unit



Indoor Unit

4-Way Cassette Type



1-Way Cassette Type



Ceiling Ducted Type (DC Low-height)



Ceiling Ducted Type (Low/High Static Pressure)



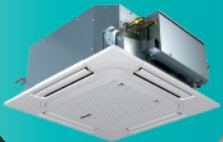
Ceiling & Floor Type



Console Type



Mini 4-Way Cassette Type



2-Way Cassette Type



Ceiling Ducted Type (AC Low-height)



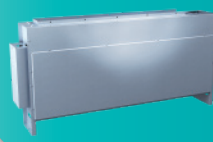
Ceiling Ducted Type (DC High Static Pressure)



Wall Mounted Type



Floor Concealed Type



Control System



HYXM-VB01A

COLORFUL TOUCH
CONTROLLER

Wired Controller



HYXE-J01H



HYXE-VA01A



HYXE-S01H

Wired Controller



HYXM-VB01A



HYXE-M01H

Wireless Controller



HYE-VD01

Centralized Controller



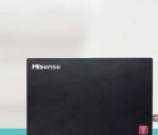
HYJM-S01H



HCPC-H2M1C



HCCS-H128H2C1YM



HYJE-H01H

■ HISENSE IS THE EARLIEST AIR CONDITIONING BRAND INTERFACED WITH
HOMEKIT THROUGH HI-HOME TO REALIZE INTELLIGENT CONTROL.

■ AIR QUALITY MONITORING BOX CAN BE CONNECTED INTO AIR
CONDITIONING SYSTEM TO REALIZE INTELLIGENT CONTROL.



Government

Turin City Hall

Location:	Turin, Italy
Capacity:	851kW
System Type:	Hi-FLEXi S Heat Recovery (High Efficiency)



Tajikistan National Symbol Tower

Location:	Dushanbe, Tajikistan
Capacity:	1646kW
System Type:	Hi-FLEXi S Mavo Series



Ghana Parliament House

Location:	Accra, Ghana
Capacity:	6440kW
System Type:	FSN1 Series with Cassette, Ducted, AHU



Positron Emissiontomography(Pet) Centers

Location:	More than 30 objects in Russia
Capacity:	More than 3755kW
System Type:	H-series, X-series



Office



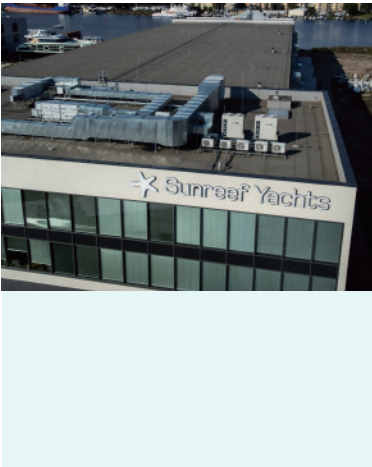
Menara AIA Central
Location: Kuala Lumpur, Malaysia
Capacity: 5970kW
System Type: W Heat Recovery



Mega Bukhara
Location: Bukhara, Uzbekistan
Capacity: 6597kW
System Type: Hi-FLEXi S Series



Hansforum Hamburg
Location: Hamburg, Germany
Area: 14100m²
Capacity: 602kW
Product Series: R Series



SUNREEF Yacht Shipyard in Gdańsk
Location: Poland
Capacity: 231kW
Product Series: S Mavo, H Series





Hoppecke Batterie Sp. z o. o. in Śródka

Location:	Poland
Capacity:	214.9kW
Product Series:	S, L and RAC Series



Gajewo Forest District in Giżycko

Location:	Poland
Capacity:	85kW
Product Series:	S Mavo



Budnex Deweloper Office Building in Gorzów Wielkopolski

Location:	Poland
Capacity:	112kW
Product Series:	S Series



Entrepreneurship Incubator buildings for BPPT in Bydgoszcz

Location:	Poland
Capacity:	266kW
Product Series:	X, H, C Series



Public Buildings

Expo Dubai 2020-Serbia Pavilion

Location:	Dubai
Capacity:	414kW
System Type:	Hisense High Ambient



Consolidation and Upgradeing of Giulesti Stadium – “Valentin Stanescu”

Location:	Bucharest, Romania
Capacity:	10758kW
System Type:	H Series, S Series



Jesus Christ of Latter-day Saints Church

Location:	Uruguay
Capacity:	1344 kW
Product Series:	S Series Heat Pump



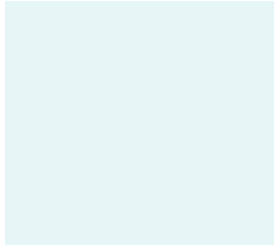
New Port of Veracruz

Location:	Veracruz, Mexico
Capacity:	1568kW
Product Series:	Hi-FLEXi S Series



Istanbul Airport-Ptt Building

Location:	Istanbul
Area:	20000m ²
Capacity:	1428kW
Product Series:	X Series



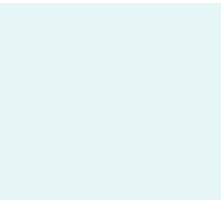
Museum of the First Piasts in Lednica

Location:	Poland
Capacity:	363kW
Product Series:	S, S-FKFSHA and H Series



Chinese Culture Center

Location:	Bucharest
Area:	7000m ²
Capacity:	543kW
Product Series:	S, X Series



Invicta Sopot - European Family Center

Location:	Poland
Capacity:	150kW
Product Series:	H Units



Factory

Xiaomi Factory Turkey

Location:	Istanbul, Turkey
Capacity:	1551kW
System Type:	S mavo Series



Jewelry Manufacturing Precinct

Location:	Johannesburg, South Africa
Capacity:	964kW
System Type:	Hi-FLEXi S Heat Recovery



Tula Defense Factory

Location:	Tula, Russia
Capacity:	4505kW
System Type:	X Series



Archbum Materials Plant

Location:	Moscow, Russia
Capacity:	4505kW
System Type:	S Series





Residence

Paradise Hills Villa

Location:	Dubai, United Arab Emirates
Capacity:	12208kW
System Type:	S Series



Core Residence TRX

Location:	Kuala Lumpur, Malaysia
Capacity:	6695 kW
System Type:	H Series, S Mavo Cooling Only Series



Westphalian Metropolis Department

Location:	Germany, Westphalian
Capacity:	244.8kW
System Type:	Hi-FLEXi R Series



Lskra Park Residence

Location:	Moscow, Russia
Capacity:	5919 kW
System Type:	S Series





Commercial



HSBC	
Location:	Dhaka, Bangladesh
Capacity:	812kW
System Type:	Hi-FLEXi S mavo Series



Mercedes-Benz Showroom at Kuwait	
Location:	Kuwait
Capacity:	913kW
System Type:	Hisense VRF High Ambient Series



Tryne Enterprise Plaza	
Location:	Manila, Philippines
Capacity:	5244kW
System Type:	S Mavo Cooling Only

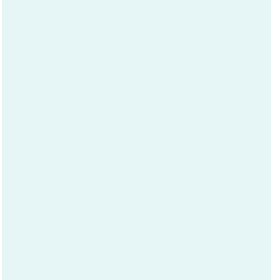
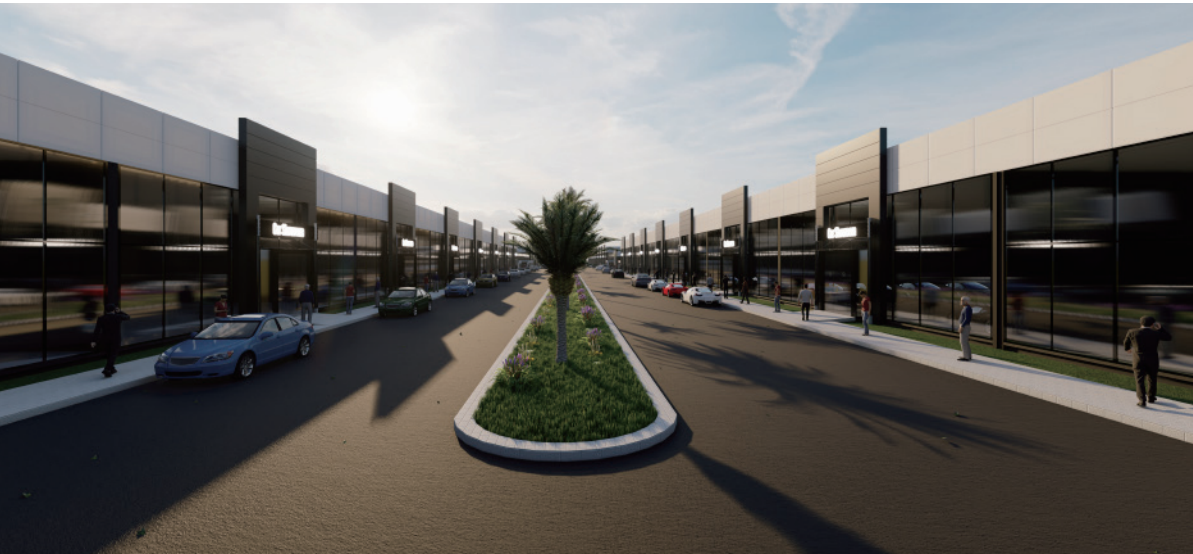
StopShop Siedlce – Shopping Center

Location:	Siedlce, Poland
Capacity:	1624kW
System Type:	S Mavo Cooling Only



Kurdistan Motors Center

Location:	IRAQ
Capacity:	3702kW
System Type:	ST3 Series

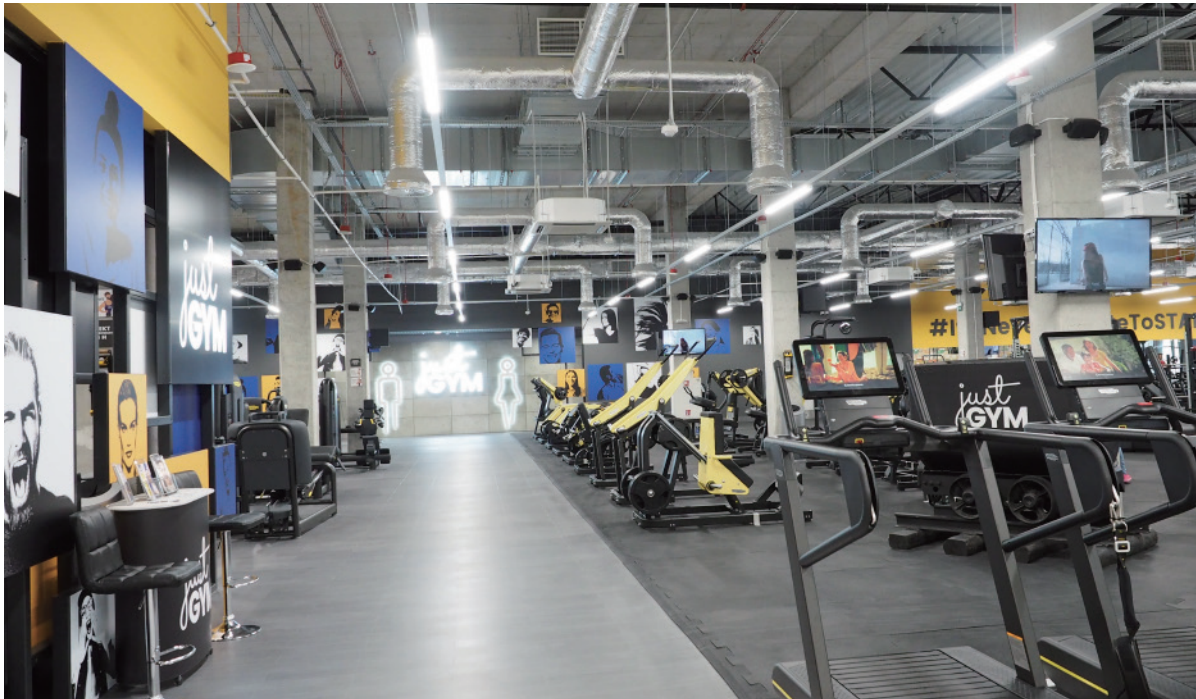


Burc Istanbul Tower

Location:	Istanbul
Area:	40000 m ²
Capacity:	1820kW
Product Series:	Mini VRF Series

Just Gym - Gym Center

Location:	Olsztyn
Scale:	2270m ²
Capacity:	363.9kW
System Type:	G、G、C Series
Location:	Lublin
Scale:	1760m ²
Capacity:	146kW
System Type:	G、C Series
Location:	Zabrze
Scale:	2100m ²
Capacity:	258kW
System Type:	G、C、L Series
Location:	Poland
Capacity:	298kW
System Type:	S Mavo and H Series
Location:	Poland
Capacity:	364kW
System Type:	G+, G and C Series





Half Price Store in Łomża

Location:	Poland
Capacity:	112kW
System Type:	S Series



Retail Park in Piła

Location:	Poland
Capacity:	390.4 kW
System Type:	G, C, L and LCAC Series





Hotel

Sky Royal Hotel

Location:	Johannesburg, South Africa
Capacity:	2050kW
Product Series:	Hi-FLEXi S Heat Pump



Hotel Omega in Olsztyn

Location:	Poland
Capacity:	250kW
Product Series:	S Mavo and S Series Chiller



Chedl Hotels and Resorts, Katara

Location:	Doha, Qatar
Capacity:	1098kW
Product Series:	Hisense S Series



5-star Mu Cang Chai Resort

Location:	Yen Bai Province, Vietnam.
Capacity:	5163kW
Product Series:	S Series



Moonlight 5 Stars Hotel

Location:	Sunny Beach, Bulgaria
Scale:	9000m ²
Capacity:	594kW
System Type:	M Series



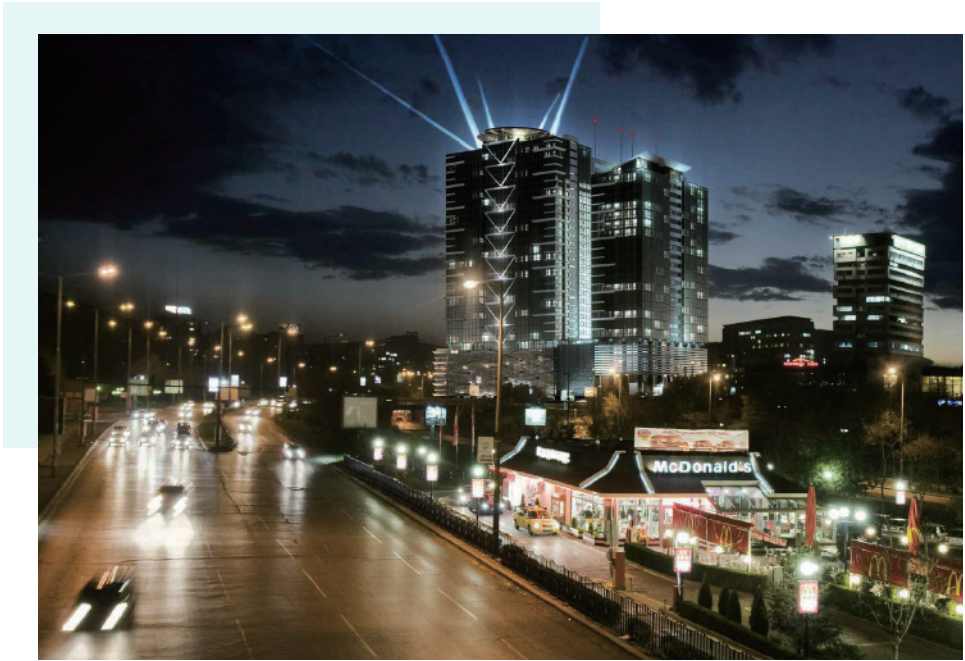
Sineva Hotel

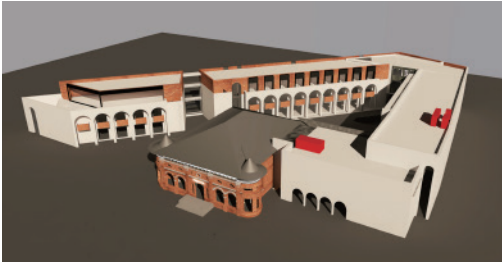
Location:	Sunny Beach Bulgaria
Scale:	7300m ²
Capacity:	291kW
System Type:	M Series



Millenium Complex

Location:	Sofia, Bulgaria
Scale:	150000m ²
Capacity:	5880kW
System Type:	R、G Series





Cozieni Hotel

Location:	Cozieni Village, Ilfov County
Scale:	350m²
Capacity:	336kW
System Type:	X Series



San Antonio Hotel

Location:	Qawra, Malta
Scale:	16,000m²
Capacity:	1064kW
System Type:	M Series





University&School



Letovo International School

Location:	Moscow, Russia
Capacity:	3380kW
Product Series:	S-Series X-Series



Canada Internatioal Scool

Location:	Phnom Penh, Cambodia
Capacity:	1652kW
Product Series:	S Cooling Only Series

Vinschool Metropolis , Riverside, Harmony, Hanoi

Location:	Phnom Penh, Cambodia
Capacity:	8680kW
Product Series:	S Cooling Only Series



Baghdad Iraq Project Reference

Location:	Baghdad Iraq
Capacity:	806kW
Product Series:	Hi-FLEXi S+ High Ambient



The building of the Faculty of Management and Economics of the Gdańsk University of Technology

Location:	Poland
Capacity:	281kW
Product Series:	S Series



Hospital



MAC Los Mochis Hospital(Consulting Rooms)

Location:	Los Mochis, Sinaloa, Mexico
Capacity:	10573kW
Product Series:	Hisense S Series



Alma-Ata Infectious Disease Hospital

Location:	Almaty, Kazakhstan
Capacity:	3416kW
Product Series:	Hi-Mod Air-cooled Chiller



South Africa Medical Project

Location:	South Africa
Capacity:	2072kW
Product Series:	S Mavo Heat Pump S Series Heat Recovery





Medic Dębica Medical Center

Location:	Poland
Capacity:	149kW
Product Series:	C, L, E Series



Udabol Hospital

Location:	Bolivia
Capacity:	11200kW
Product Series:	Hi-FLEXi S Series & Hi-FLEXi G+ Series



Buildings of the Provincial Infectious Diseases Hospital in Warsaw

Location:	Poland
Capacity:	290kW
Product Series:	S Series